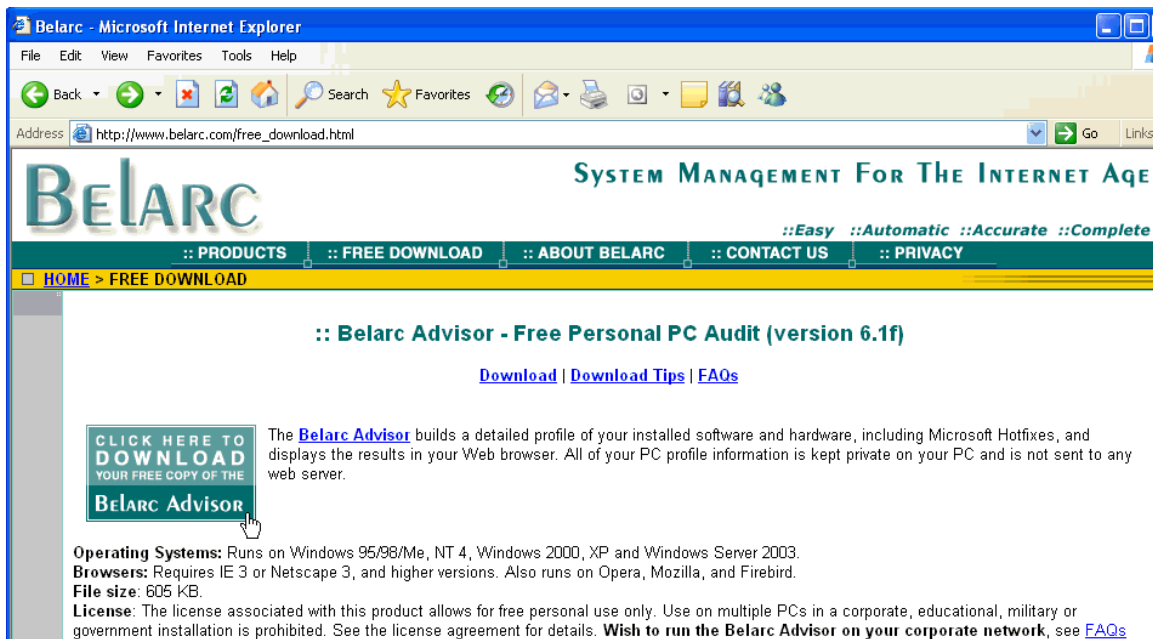


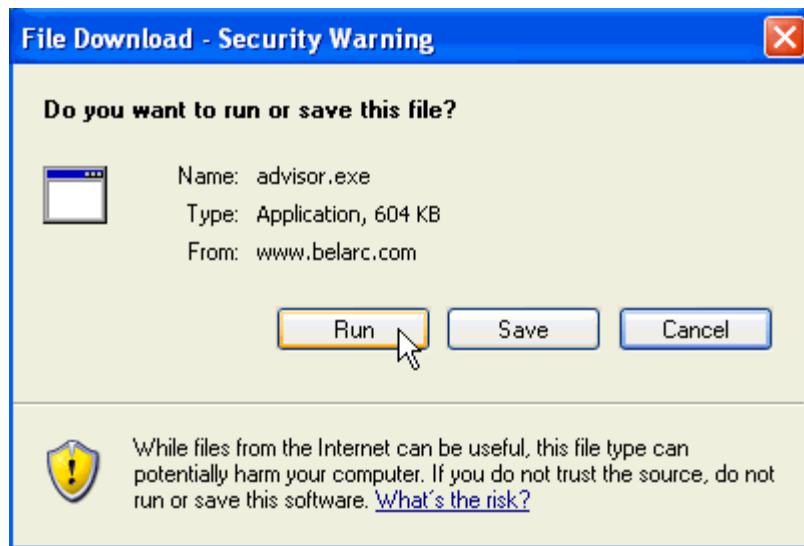
How to Use Belarc

The [Belarc Advisor](#) builds a detailed profile of your installed software and hardware and displays the results in your Web browser.

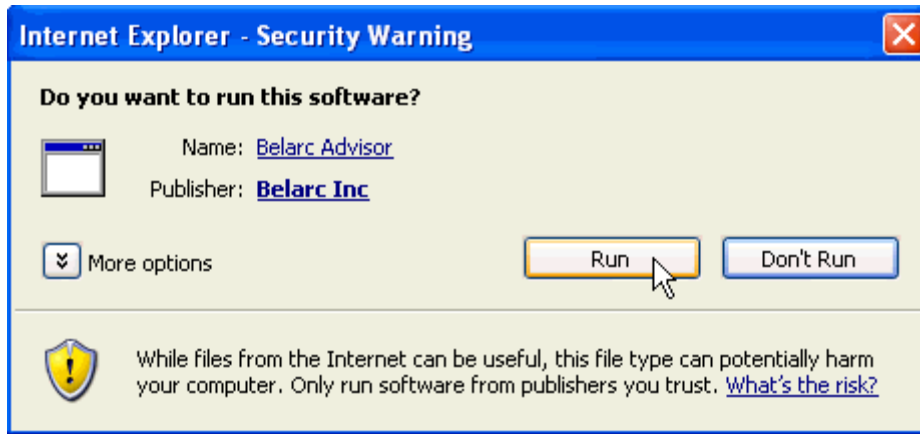
On your workstation, click the above link to take you to the following web page...



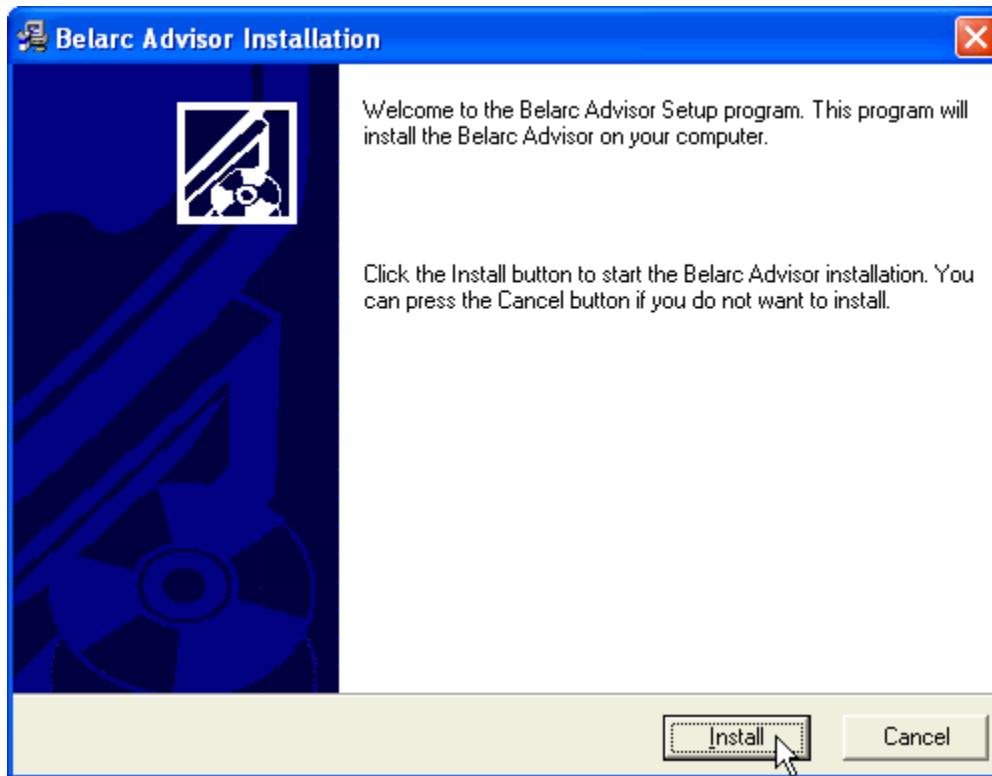
Click the green button to download Belarc.



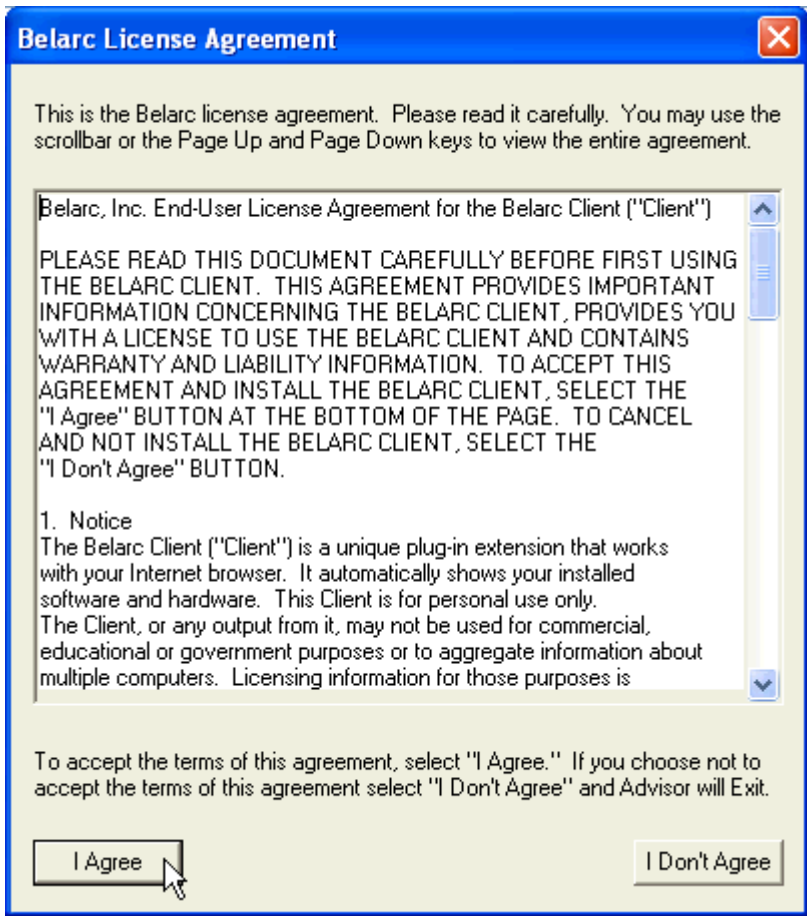
Click **Run** to download and install the program.



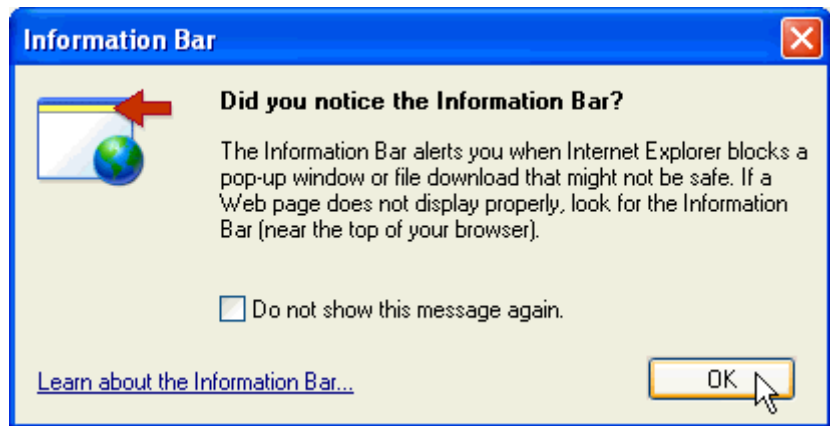
Click **Run** again.



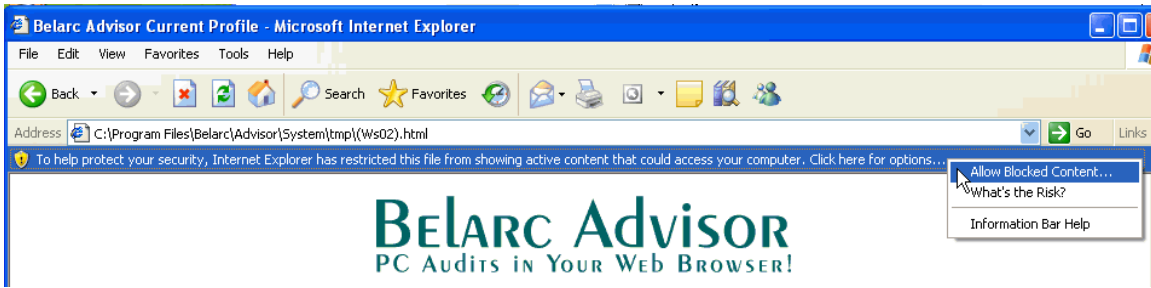
Click **Install**.



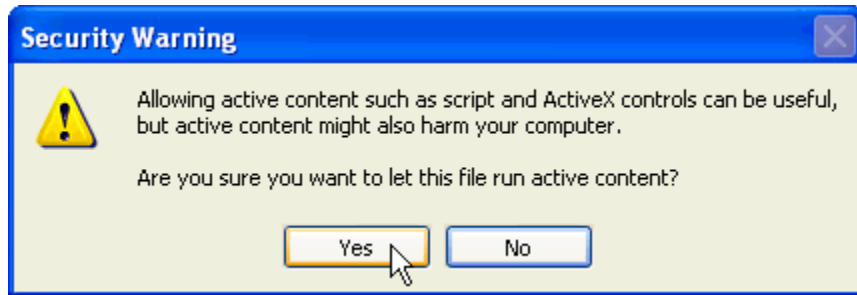
Click **I Agree**.



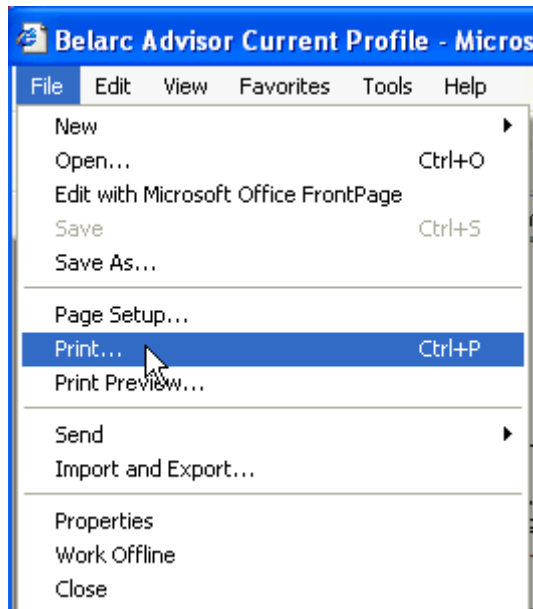
Click **OK** if the following dialog box appears.



If above security warning appears, click where it reads **Click here for options...** then click **Allow Blocked Content**.



Click **Yes**. At this point the software will auto-install and generate a configuration report for your workstation.



Click File / Print to print the report. Repeat this process for each of your workstations and file server. **Warning:** If you have a Novell file sever, do **NOT** attempt to run this report on your Novell file server. When all reports have been printed, FAX the printed reports and your FAX coveragepage to **770-242-8188**.