

## How to Backup Win2000 System State Data

Crash recovery of a Win2000 system requires the restoration of the critical components know as the “system state data”.

On a Win2000 Pro computer, the system state data consists of...

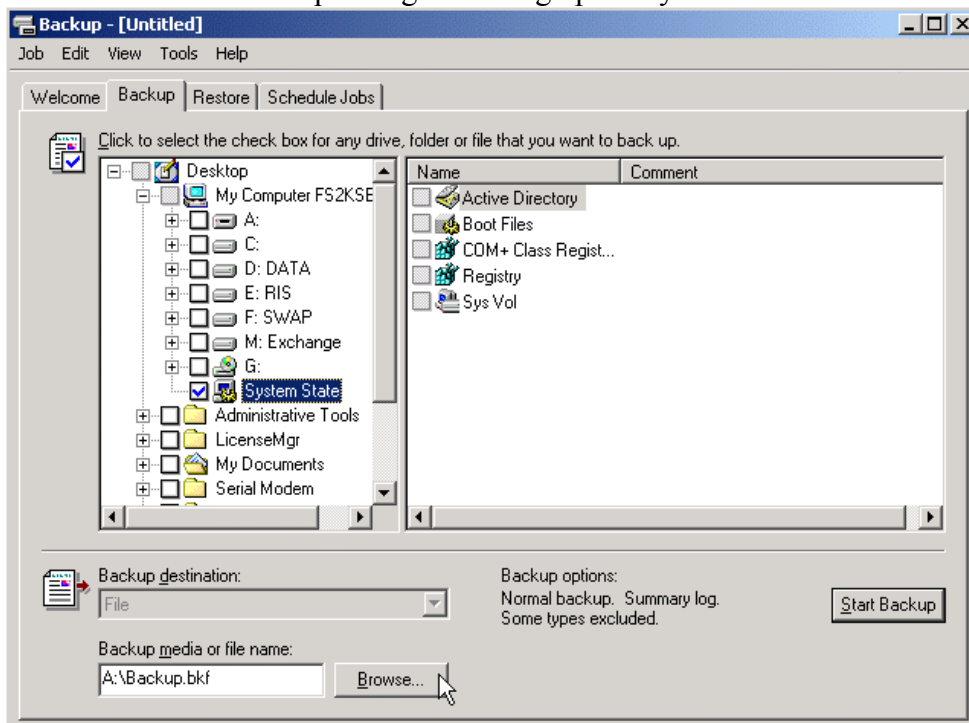
- ❑ The Registry
- ❑ The Component Services Class Registration Database
- ❑ All System startup files such as NTLDR and NTOSKRNL

On Win2000 Server/AdvServer computer, system state data consists of...

- ❑ Items 1 – 3 above
- ❑ Active Directory & SysVol folder (on domain controllers)
- ❑ Certificate Services database (if Certificate Server installed)

Backup of the system state data using the Win2000 Backup utility.

- ❑ Open the Backup utility
- ❑ Select the Backup Page
- ❑ In the console tree, expand My Computer (if necessary), and then select the System State option as shown in Figure A.
- ❑ Confirm the correct destination for your backup is selected.
- ❑ Use the Backup Destination dropdown list to change the destination if necessary.
- ❑ Click Start Backup to begin backing up the system state data.



L:\Setup\SysDocs\How-To\Technical\How to Bkup Win2000 System State Data.doc